

Transportation

The existing and proposed uses are comparable, in that four full size pitches exist currently, and this remains the case as part of the proposal. Whilst two artificial pitches are proposed instead of grass, the change only comes from the ability to use these more frequently across the day, or at weekday evenings for training/night games.

Travel for these purposes is expected to occur largely outside of the network peak periods, and typically:

- During school hours
- Late evenings
- Weekends

Travel Plan

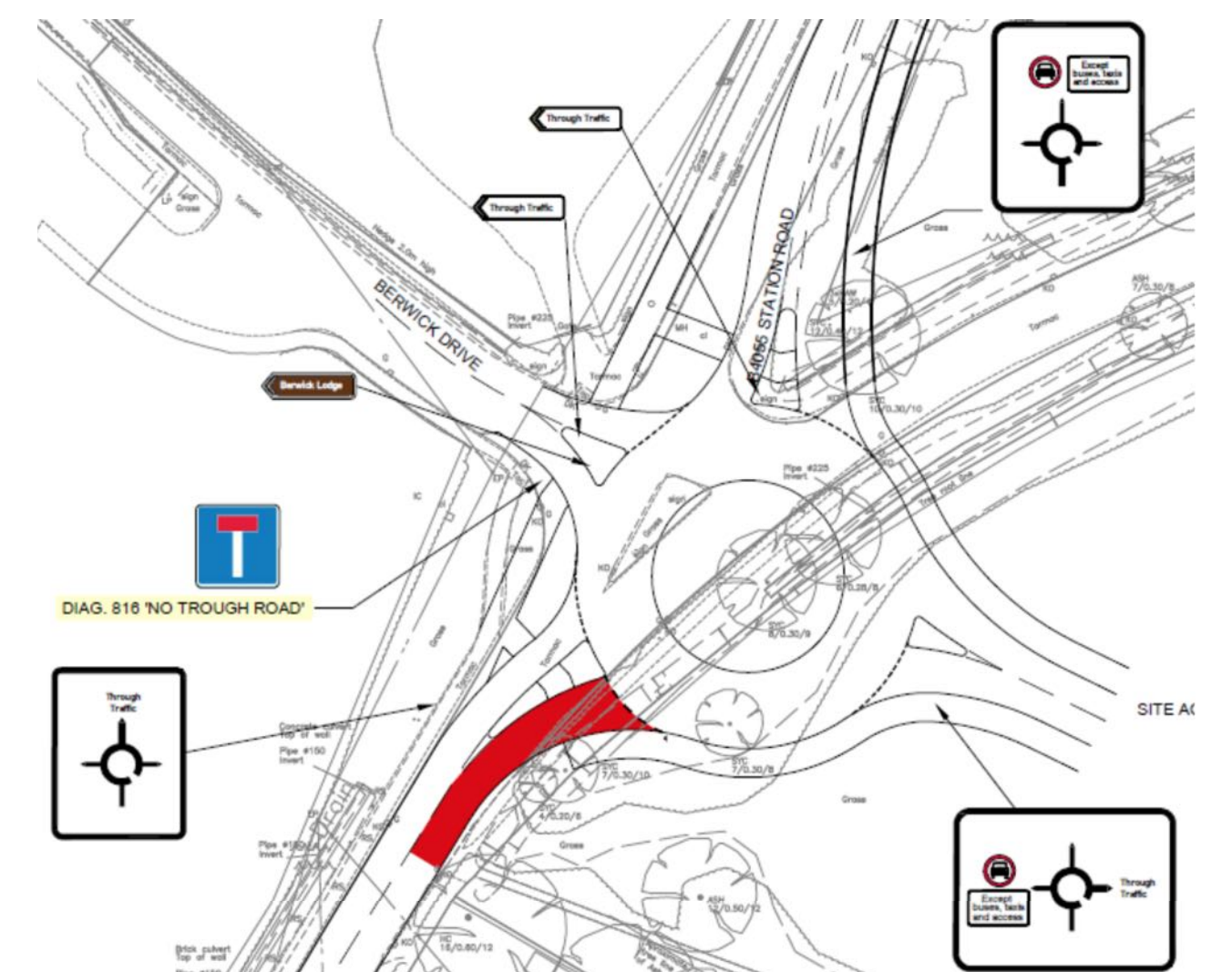
A bespoke Travel Plan is to be prepared which is specific to the development proposal and its anticipated users. Its purpose is to promote sustainable travel to/from the site, and will contain a range of measures and initiatives in order to achieve as high a use of sustainable modes as possible.

Access

The existing access off Berwick Drive is to be retained. There is however a proposed improvement to Station Road as part of the strategic residential development proposal on land to the north of the site and west of the A4018. The committed proposal includes relocating the bus gate from its current position to a point south of Berwick Drive, and providing a roundabout junction in this location.

As part of the application process, Transport Assessment and Travel Plan reports are being prepared, which will be submitted with the planning application for review and approval by South Gloucestershire Council.

These documents are being prepared in accordance with local and national guidance and policy, and will comprehensively assess the impact of the proposals and present an appropriate movement strategy.



Above: The consented alteration to the local highway network

The Lawns Sports Ground Context